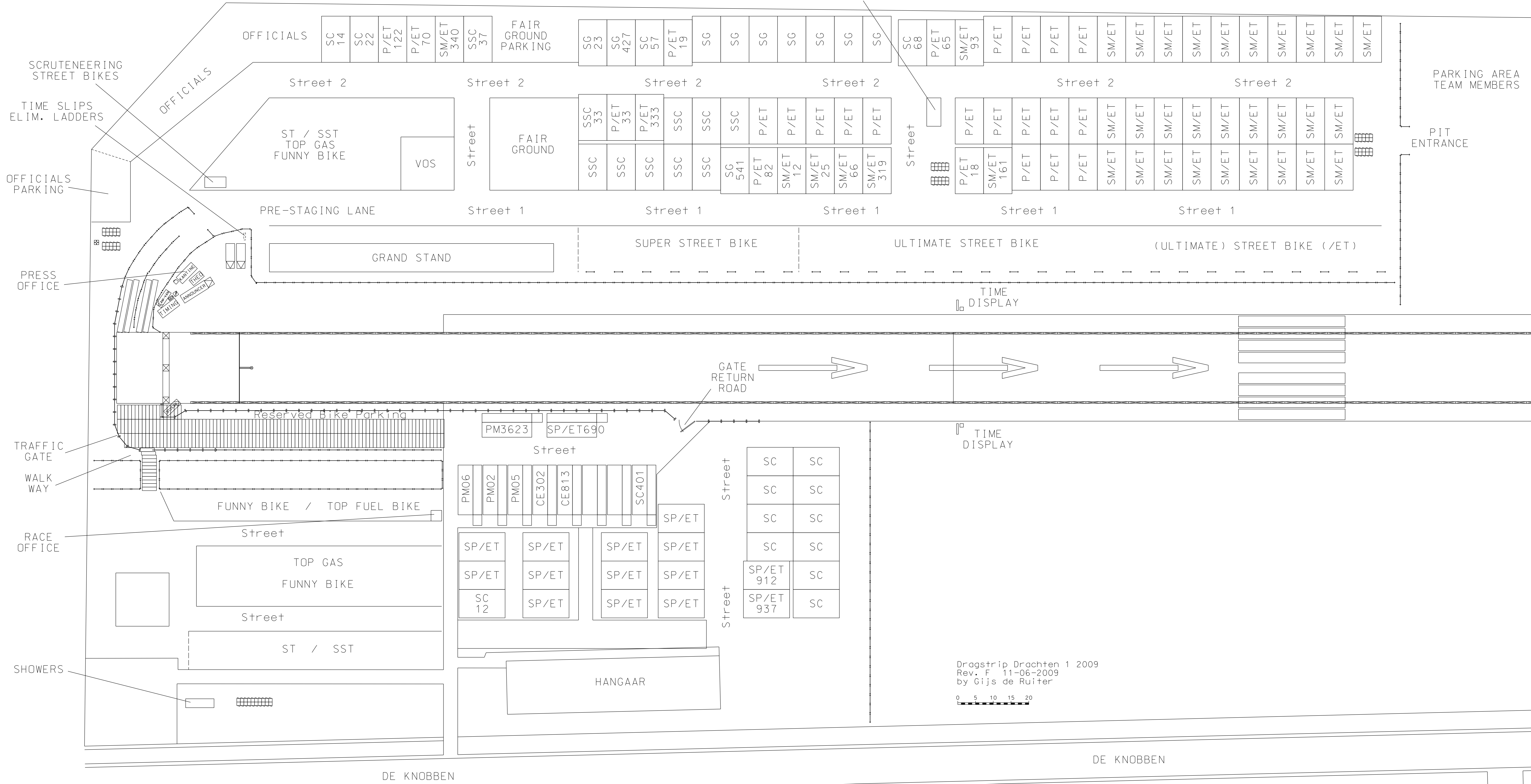
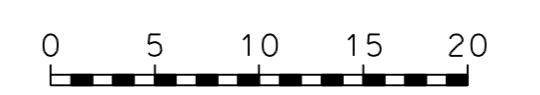


AVERAGE PIT SIZE PER CAR TEAM 8 x 13 mtr (W x D) = 104m<sup>2</sup>  
 (Santa Pod standard pit size = 6,7 x 17 = 114m<sup>2</sup>)

SCRUTENEERING STREET CARS



Dragstrip Drachten 1 2009  
 Rev. F 11-06-2009  
 by Gijs de Ruiter



P 1